

Dora Erickson Elementary






Problem

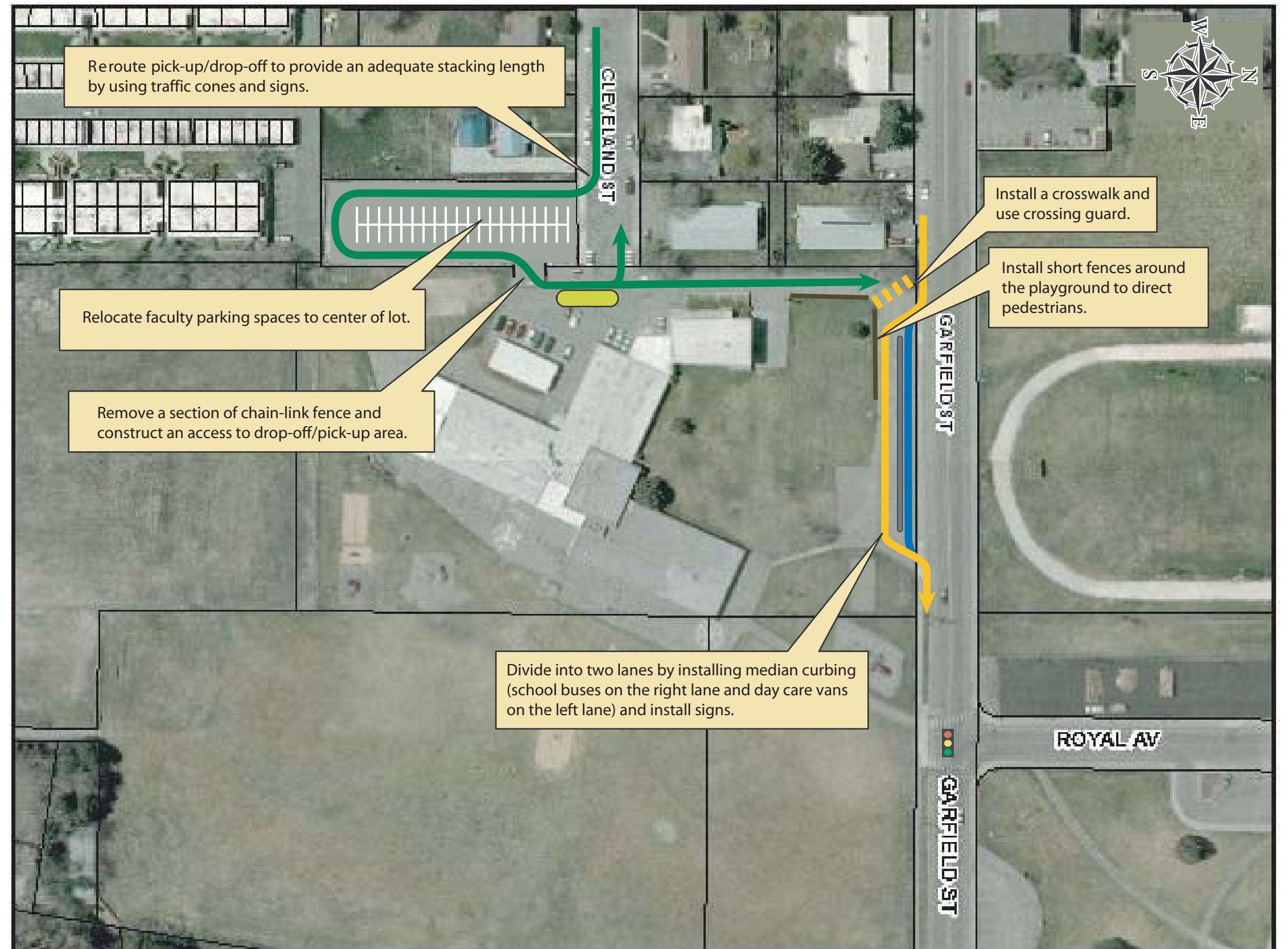
Very long school traffic queues along Cleveland Street to Fanning Avenue during pick-up periods.

Parents are dropping off and picking up students in bus loading area.

Pedestrian/vehicle conflicts at Garfield Street and school exit driveway.

School buses and day care vans load in the same area.

Legend	
	Parent pick-up/drop-off route
	School bus route
	Day care van loading route
	Recommendation
	Student loading area



Eagle Rock Junior High

Problem

School bus driveway is blocked by the queue spillback from the front parking area.

Traffic congestion/conflicts at special education bus area.

Vehicle queues from existing pick-up/drop-off area extend onto Pancheri Drive.

Pancheri Drive is not wide enough west of the school to allow for a left-turn lane into the pick-up/drop-off area.

Parents drop off students along eastbound Pancheri Drive and block through traffic.

Legend



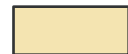
Parent pick-up/drop-off route



School bus route



Special education bus loading route



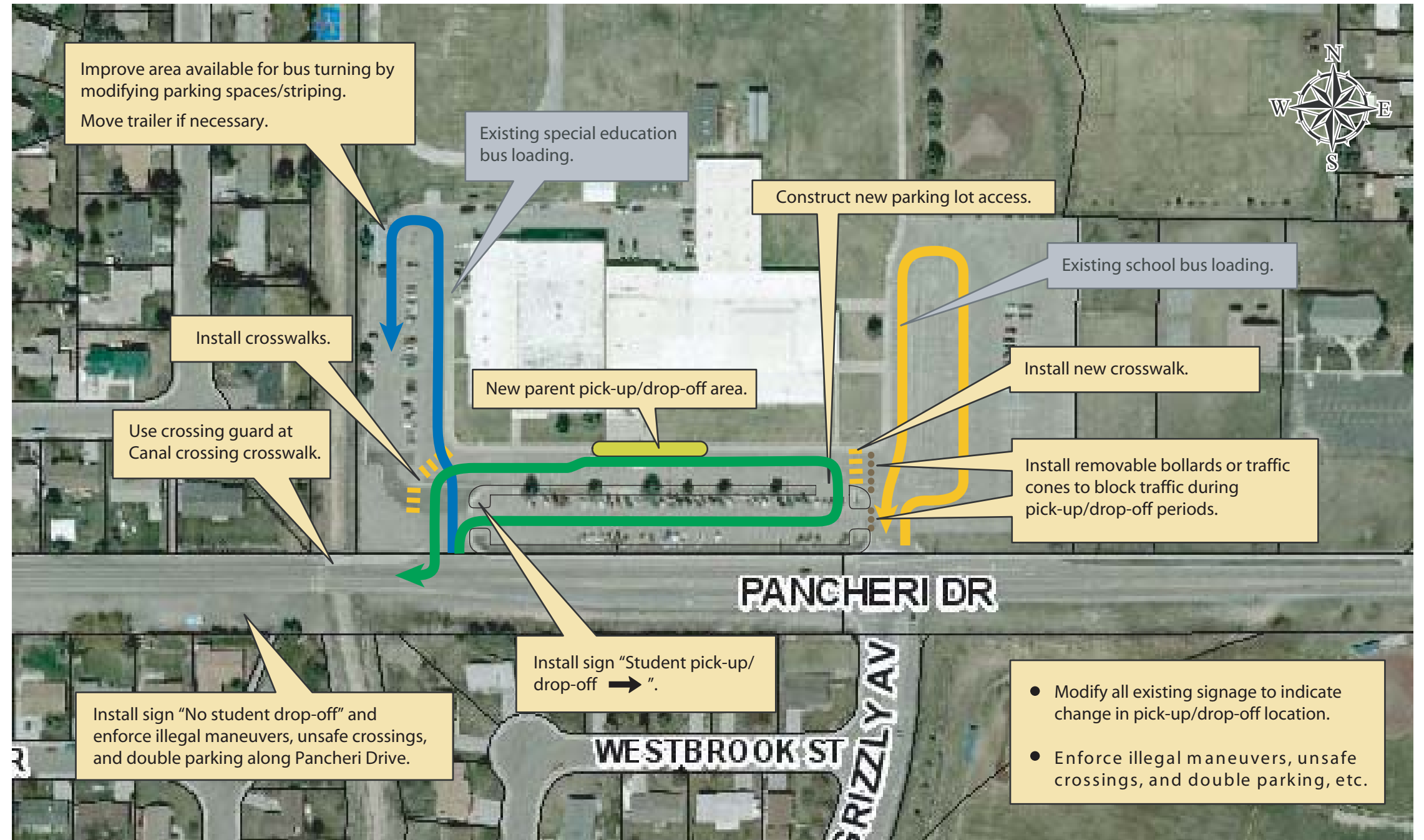
Recommendation



Existing operation



Student loading area



Falls Valley Elementary



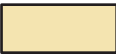

Problem

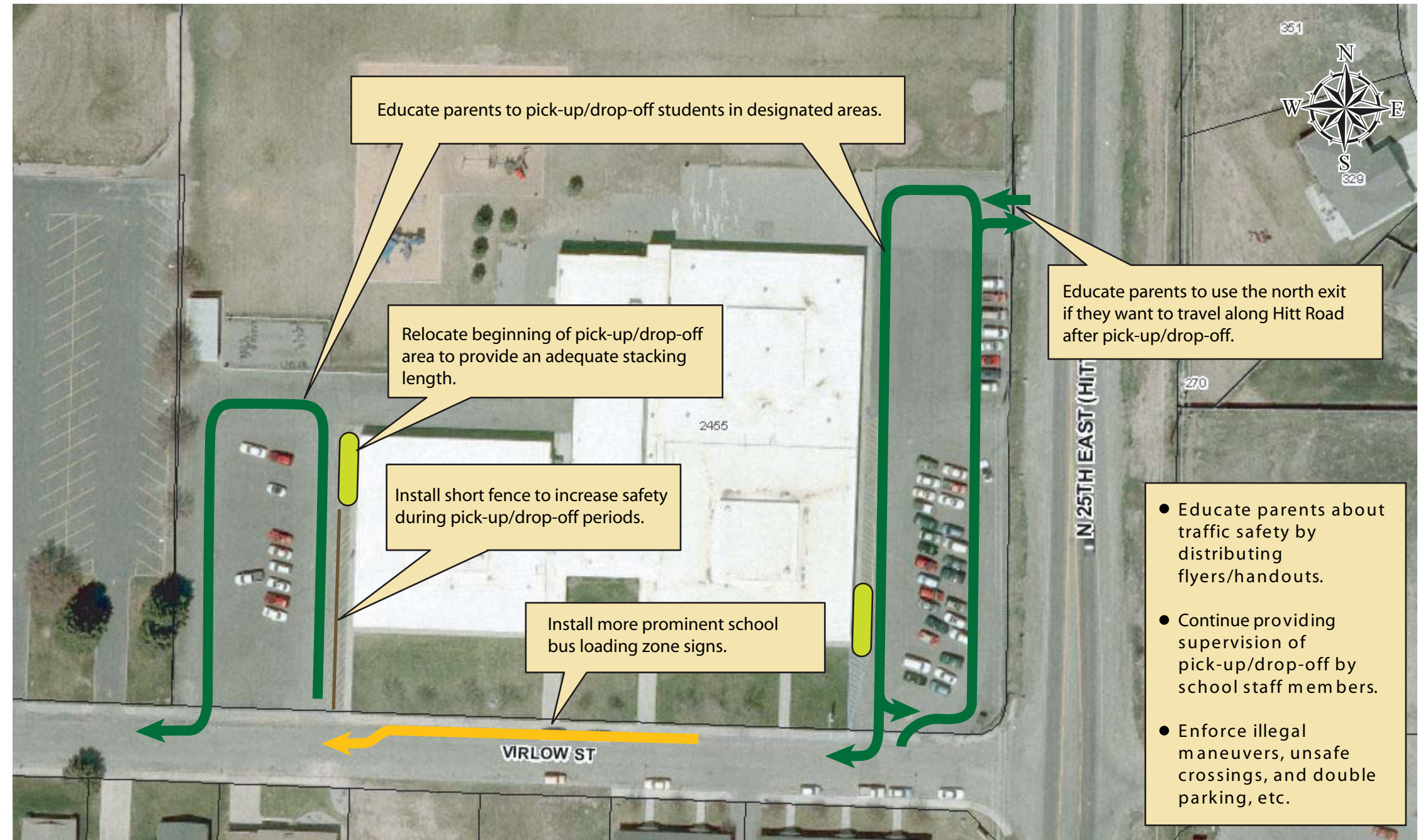
Students being loaded/unloaded across Virlow Street and in bus loading zone, instead of in designated areas.

Traffic congestion/conflicts on Virlow Street during school beginning/ending periods.

Southbound queues from the Hitt Road/1st Street traffic signal back through the Virlow intersection.

Legend

-  Parent pick-up/drop-off route
-  School bus route
-  Recommendation
-  Student loading area






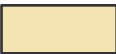


Hawthorne Elementary

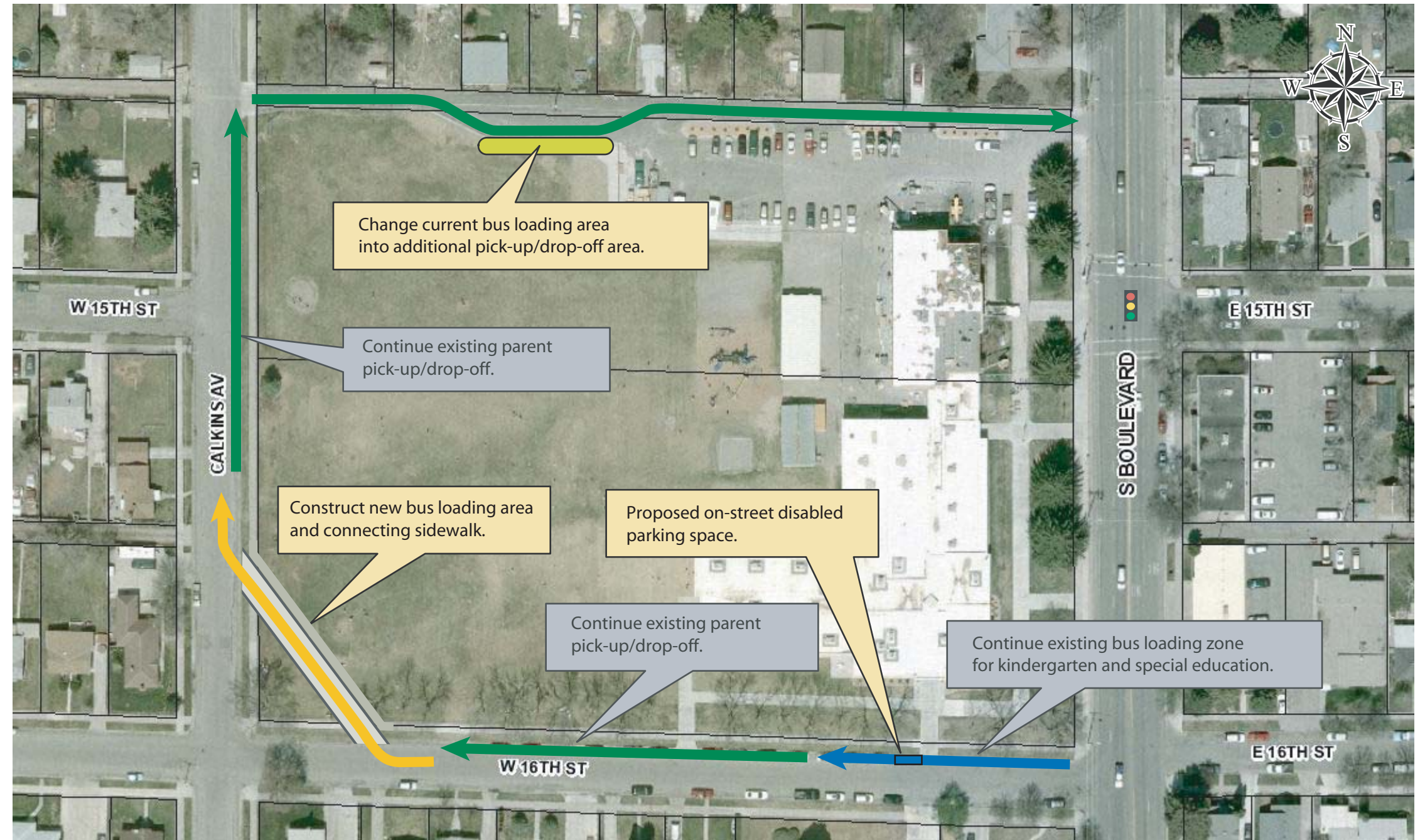
Problem

School buses have great difficulty exiting alley onto South Boulevard due to sharp turning radius and poor sight distance. Must turn into 2 lanes of traffic when exiting right. Turning left is very difficult with 4-lane configuration of South Boulevard.

Dropping off/picking up students in bus area for kindergarten and special education on 16th Street.

Legend

-  Parent pick-up/drop-off route
-  School bus route
-  Special education bus loading route
-  Recommendation
-  Existing operation
-  Student loading area






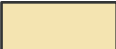


Linden Park Elementary

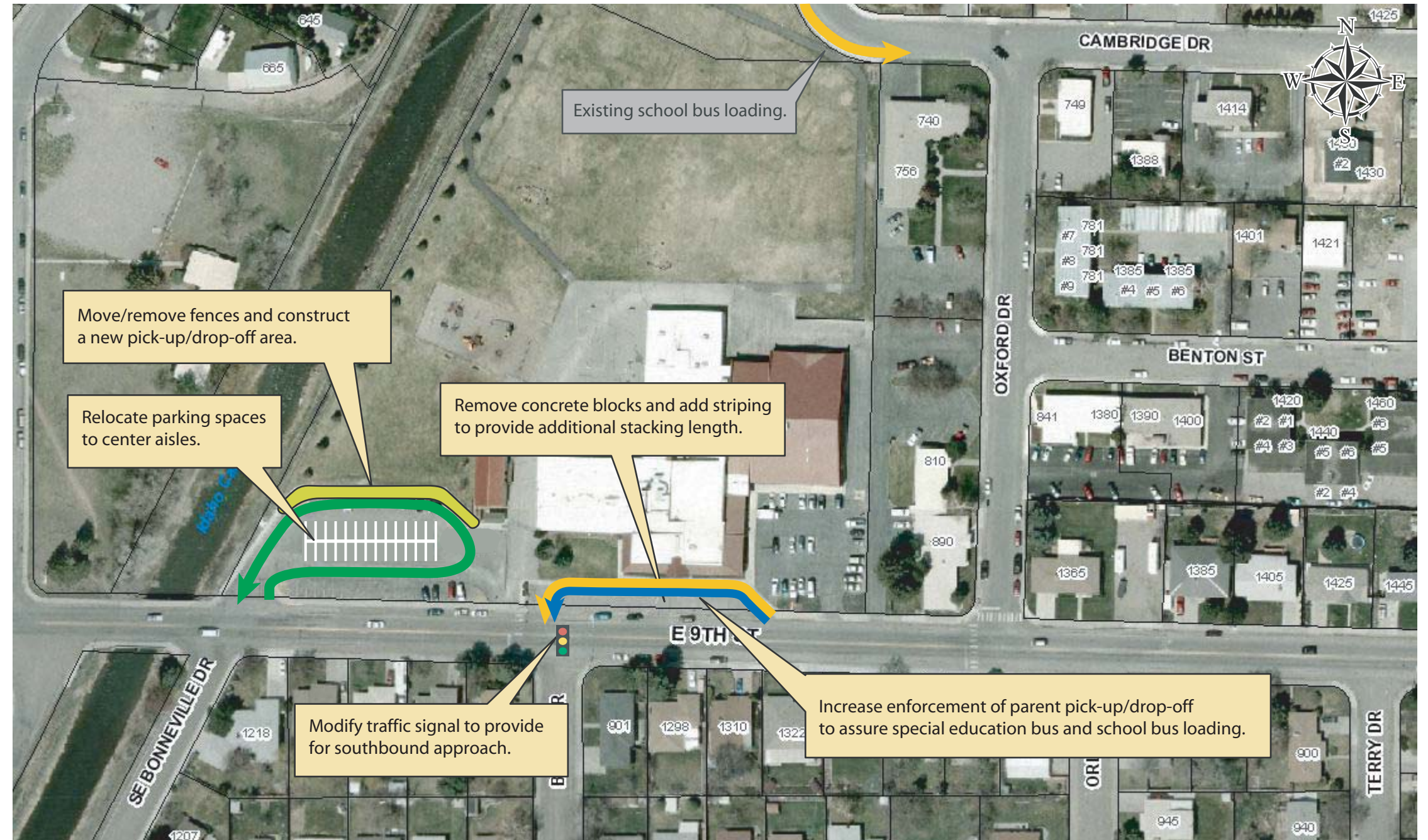
Problem

School bus loading is behind the school property on Cambridge Drive.

Student pick-up/drop-off in the bus zone in front of school.

Legend

-  Parent pick-up/drop-off route
-  School bus route
-  Special education bus/day care van route
-  Recommendation
-  Student loading area
-  Bus loading area





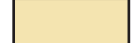

Mountain Valley Elementary

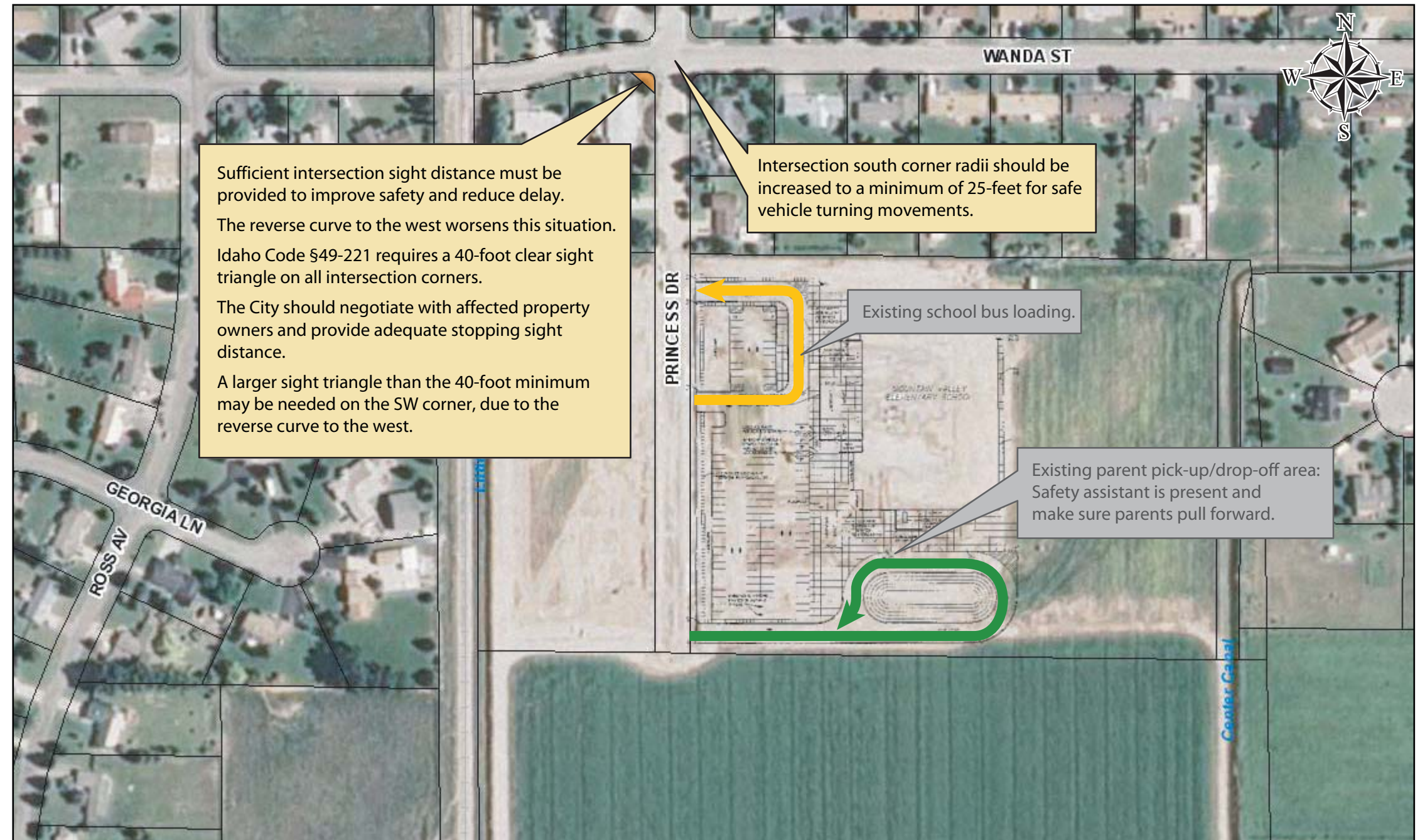
Problem

Traffic congestion and safety issues at the intersection of Wanda Street and Princess Drive.

Vehicle queues in the PM often back up past school driveways.

When late, parents sometimes drop off students at front door, not in designated area.

Legend	
	Parent pick-up/drop-off route
	School bus route
	Recommendation
	Existing operation




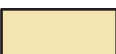


Temple View Elementary

Problem

Drop-off/pick-up on N Colorado Avenue instead of designated area. Students walk in-between buses.

Legend

-  Parent pick-up/drop-off route
-  School bus route
-  Special education bus route
-  Recommendation



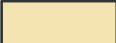



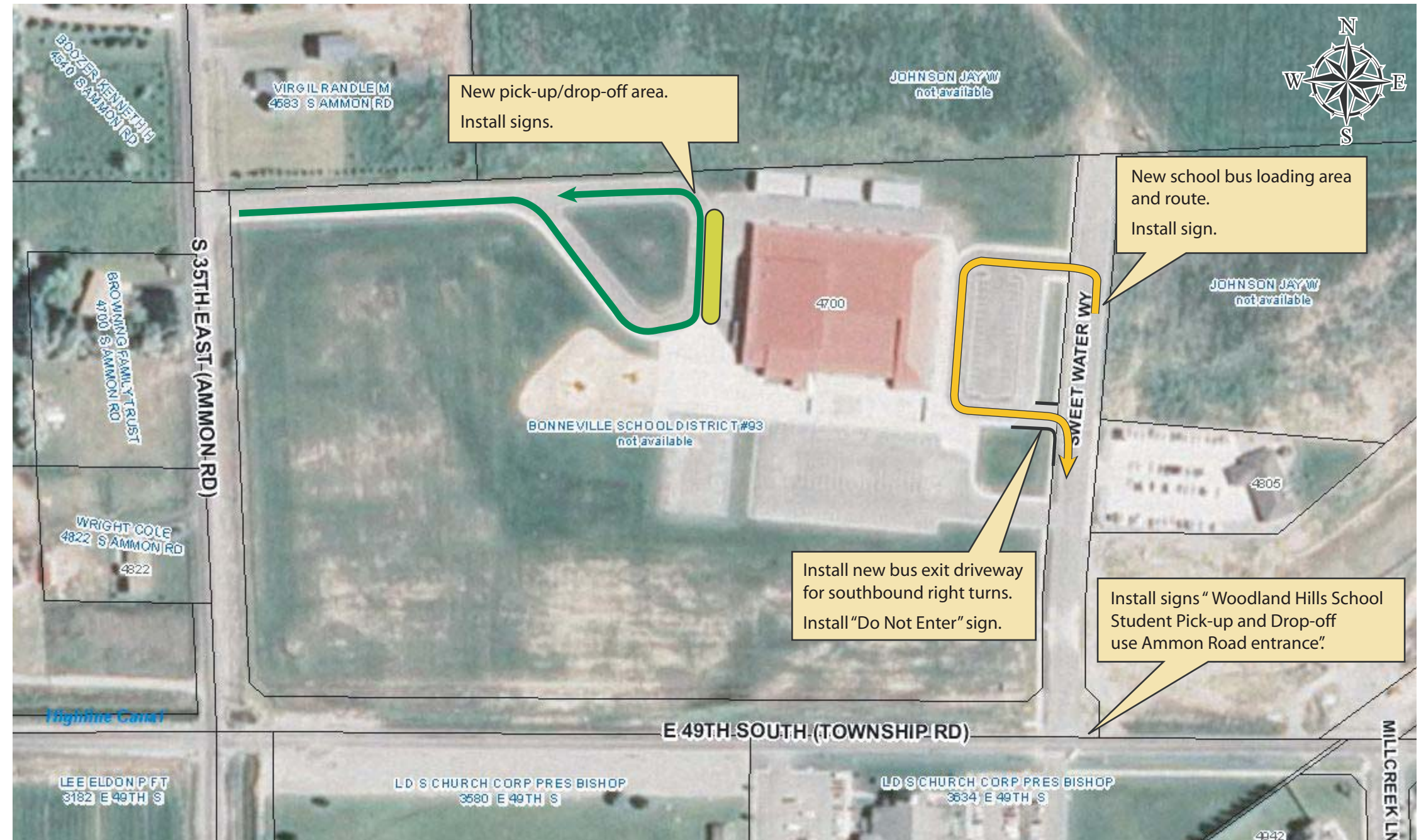
Woodland Hills Elementary

Problem

Pick-up/drop-off congestion, with vehicle queues extending past the general parking entrance.

Student pick-up/drop-off occurs in the general parking lot not in designated zones.

Legend	
	Parent pick-up/drop-off route
	School bus route
	Recommendation
	Student loading area








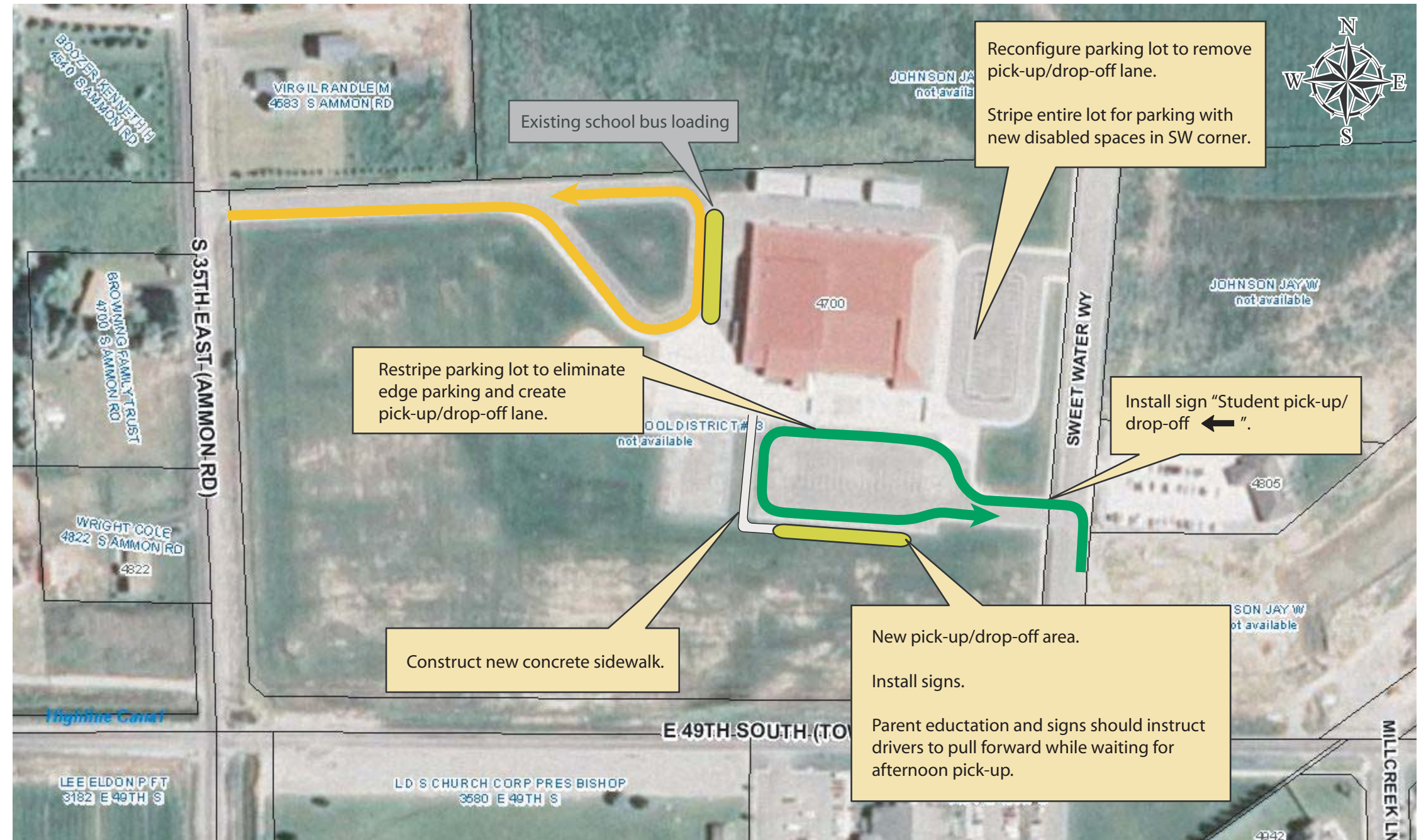
Woodland Hills Elementary (Alternative #2)

Problem

Pick-up/drop-off congestion, with vehicle queues extending past the general parking entrance.

Student pick-up/drop-off occurs in the general parking lot not in designated zones.

Legend	
	Parent pick-up/drop-off route
	School bus route
	Recommendation
	Existing operation
	Student loading area



Recommended Changes to Existing Schools
Opinion of Probable Cost
August 2011

SCHOOL	DESCRIPTION OF WORK	QUANTITY	UNIT	UNIT COST	EXTENSION
Dora Erickson Elementary	Remove chain-link fence.	25	linear feet	\$ 5.00	\$ 125.00
	Remove existing parking striping at the faculty parking lot	1	lump sum	\$ 250.00	\$ 250.00
	Install a crosswalk at the exit driveway and Garfield St.	50	linear feet	\$ 5.00	\$ 250.00
	Re-stripe parking spaces at the faculty parking lot.	1	lump sum	\$ 500.00	\$ 500.00
	Install signs "parents pick-up/drop-off area" along Cleveland St.	2	each	\$ 300.00	\$ 600.00
	Install signs "school bus and day care van loading area" along Garfield St.	2	each	\$ 300.00	\$ 600.00
	Construct access from the parking lot to drop-off/pick-up area.	200	square feet	\$ 6.00	\$ 1,200.00
	Install a median concrete curb.	180	linear feet	\$ 15.00	\$ 2,700.00
	Install a fence around the playground.	220	linear feet	\$ 15.00	\$ 3,300.00
	Place traffic cones during pick-up/drop-off periods			unknown	-
	Provide a crossing guard at the new crosswalk.			unknown	-
TOTAL					\$ 9,525.00
Eagle Rock Junior High	Install a crosswalk at the east of the school front driveway.	40	linear feet	\$ 5.00	\$ 200.00
	Move trailer and remove existing parking lot striping at the west parking lot.	1	lump sum	\$ 250.00	\$ 250.00
	Install a sign "parent pick-up/drop-off area" in front of the school.	1	each	\$ 300.00	\$ 300.00
	Install a sign "student pick-up-drop-off →" at the west access to the front parking lot.	1	each	\$ 300.00	\$ 300.00
	Install a sign "No student drop-off" along Pancheri Dr.	1	each	\$ 300.00	\$ 300.00
	Modify existing signs to change in pick-up/drop-off location.	1	each	\$ 300.00	\$ 300.00
	Install two crosswalks at the west parking lot access driveway.	70	linear feet	\$ 5.00	\$ 350.00
	Re-stripe the west parking lot.	1	lump sum	\$ 500.00	\$ 500.00
	Install removable bollards	5	each	\$ 250.00	\$ 1,250.00
	Construct new asphalt parking lot access at the front parking lot.	300	square feet	\$ 6.00	\$ 1,800.00
	Enforce illegal maneuvers, unsafe crossings, and double parking along Pancheri Dr.			unknown	-
Provide a crossing guard a Canal crossing crosswalk.			unknown	-	
TOTAL					\$ 5,550.00
Falls Valley Elementary	Install a bus loading zone sign along Viriow St.	2	each	\$ 300.00	\$ 600.00
	Install a sign indicating proper location of pick-up/drop-off area at each parking lot entrance.	2	each	\$ 300.00	\$ 600.00
	Install fences.	120	linear feet	\$ 15.00	\$ 1,800.00
	Educate parents to pick-up/drop-off students in designated areas.			unknown	-
	Educate parents to use the north exit of the east parking lot to travel along Hitt Rd.			unknown	-
Enforce illegal maneuvers, unsafe crossings, and double parking.			unknown	-	
TOTAL					\$ 3,000.00
Hawthorne Elementary	Paint disabled parking zone on W 16th St.	25	linear feet	\$ 5.00	\$ 125.00
	Install a disabled parking sign on W 16th St.	1	each	\$ 300.00	\$ 300.00
	Install a sign "parent pick-up/drop-off area" at near intersection of Calkins Ave. and existing school bus driveway.	2	each	\$ 300.00	\$ 600.00
	Construct two concrete driveway at the corner of Calkins Ave. and W 16th St.	45	square yd	\$ 30.00	\$ 1,350.00
	Construct a connecting sidewalk at the corner of Calkins Ave. and W 16th St.	110	square yd	\$ 30.00	\$ 3,300.00
	Construct asphalt pavement for bus loading area at the corner of Calkins Ave. and W 16th St.	3,000	square feet	\$ 6.00	\$ 18,000.00
TOTAL					\$ 23,675.00
Linden Park Elementary	Remove concrete blocks in the school front loading area.	1	lump sum	\$ 250.00	\$ 250.00
	Remove existing parking lot striping at the west parking lot.	1	lump sum	\$ 250.00	\$ 250.00
	Paint striping in the school front loading area.	200	linear feet	\$ 2.50	\$ 500.00
	Re-stripe parking spaces at the west parking lot.	1	lump sum	\$ 500.00	\$ 500.00
	Remove fences in the west parking lot.	150	linear feet	\$ 5.00	\$ 750.00
	Modify and install new signs	4	each	\$ 300.00	\$ 1,200.00
	Modify a traffic signal at the intersection of E 9th St. and Bower Dr.	1	each	\$ 15,000.00	\$ 15,000.00
	Change all bus routes to use the school front loading area.			unknown	-
Enforce parent pick-up/drop-off at the school front loading area.			unknown	-	
TOTAL					\$ 18,450.00
Mountain Valley Elementary	Remove obstacles to provide a minimum 40-foot clear sight triangle on the SW corner of Wanda St. and Princess Dr. intersection.	1	lump sum	\$ 500.00	\$ 500.00
	Modify south corner radii at Wanda St. and Princess Dr. intersection.	250	square feet	\$ 6.00	\$ 1,500.00
	Potential small corners of right-of-way may need to be acquired at Wanda St. and Princess Dr. intersection.			unknown	-
TOTAL					\$ 2,000.00
Temple View Elementary	Remove some parking spaces in the parking lot.	1	lump sum	\$ 250.00	\$ 250.00
	Install a sign "Parents pick-up/drop-off" along N Colorado Ave.	1	each	\$ 300.00	\$ 300.00
	Install signs "school bus loading area" at the parking lot access along Scorpius Dr.	2	each	\$ 300.00	\$ 600.00
	Remove chin-link fences in from of school along N Colorado Ave.	250	linear feet	\$ 5.00	\$ 1,250.00
	Construct an additional asphalt driveway for a bus exit.	500	square feet	\$ 6.00	\$ 3,000.00
	Construct an additional faculty parking lot at the south of the school building.	5000	square feet	\$ 4.00	\$ 20,000.00
TOTAL					\$ 25,400.00
Woodland Hills Elementary	Install a sign "school bus loading area" along Sweet Water Way.	1	each	\$ 300.00	\$ 300.00
	Install a sign " Woodland Hills student pick-up/drop-off use Ammon Road entrance" at the intersection of Township Rd and Sweet Water Way.	1	each	\$ 300.00	\$ 300.00
	Install a sign " Do Not Enter" at the new bus exit driveway.	1	each	\$ 300.00	\$ 300.00
	Install a sign "parents pick-up/drop-off area" along Ammon Rd. and pick-up/drop-off area.	2	each	\$ 300.00	\$ 600.00
	Construct a new bus exit driveway.	900	square feet	\$ 6.00	\$ 5,400.00
TOTAL					\$ 6,900.00